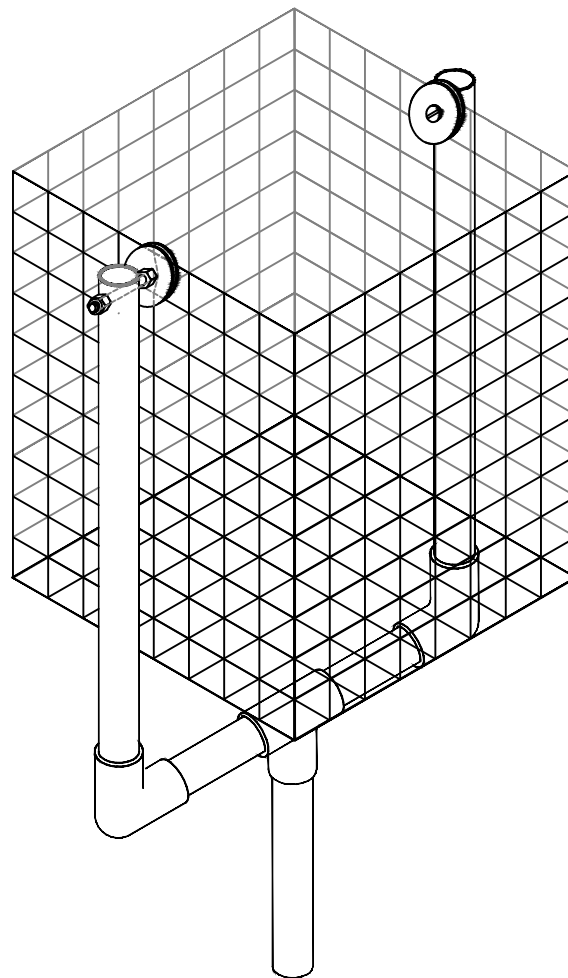


The Purvis Lifter Plans

Designed by: Dick Purvis



Southern California Bluebird Club

www.socalbluebirds.org

SHEET COVER OF 7

The Purvis Lifter Plans

List of Materials & Cut List

List of Materials & Cut List			
Item:	Description: (Qty)	Qty/Frame	Notes:
Wire Cloth	1" x 1" Cage Wire, 24" x 15'	As Req'd	Lowe's # 254106
Pipe	PVC, 3/4" x 10' (makes 3 frames)	As Req'd	Schedule 40
Elbow	PVC, 3/4"	2	Schedule 40
Tee	PVC, 3/4"	1	Schedule 40
Cement	PVC, Clear	As Req'd	
Screw	1/4" - 20 x 2", Zinc Plated, Pan Head	3	
Washer, Fender	Bolt=1/4", O.D.=1.5"	4	McFadden-Dale #290018
Nut, Lock	1/4" - 20, Zinc Plated, Nylon Insert	2	Basket Pivot Caps
Nut	Wing, 1/4" - 20, Zinc Plated	1	Stub/Pole Captive
Arm, cut Pipe	PVC 3/4" x 12-1/2"	2	Schedule 40
Side, cut Pipe	PVC 3/4" x 3-3/4"	2	Schedule 40
Stub, cut Pipe	PVC 3/4" x 9-1/2"	1	Schedule 40
Basket Side	Wire Cloth, Cut & Bend	1	Sheets 3, 4 & 5
Basket Bottom	Wire Cloth, Cut & Assemble	1	Sheets 3, 4 & 5

Instructions:

- Basket** - Cut sides and bottom per flat pattern diagrams on Sheet 3.
- Assemble basket per diagrams on Sheets 4 & 5.
- Frame** - Assemble Frame as shown on Sheet 6. Layout pieces on a flat surface, pre-assemble w/o glue. Verify space between Arms is approx 10" and Basket will fit properly.
- To cement, add spare ELLs or TEEs to blank ends so frame will remain level during assembly. (Use wax paper to protect work surface). Cement in the following order:
 - STUB to TEE,
 - ARMs to ELBOWs
 - SIDEs to ELBOWs,
 - SIDEs & ELBOWs to TEE,
- Drill 9/32" Dia Hole in each ARM for Basket Pivot Screw (1/4"-20 x 2"), Forstner bit works best.
- Drill 9/32" Dia Hole in Stub for Stub/Pole Captive Screw (1/4"-20 x 2") to match pool pole or other extension pole.
- Connect Basket to Frame using (2) 1/4"-20 Screws, (2) Lock Nuts, (2) 1/4"-20 Nuts & (4) 1/4 x 1-1/2" Fender Washers to the top row, at center as shown on Sheet 6.

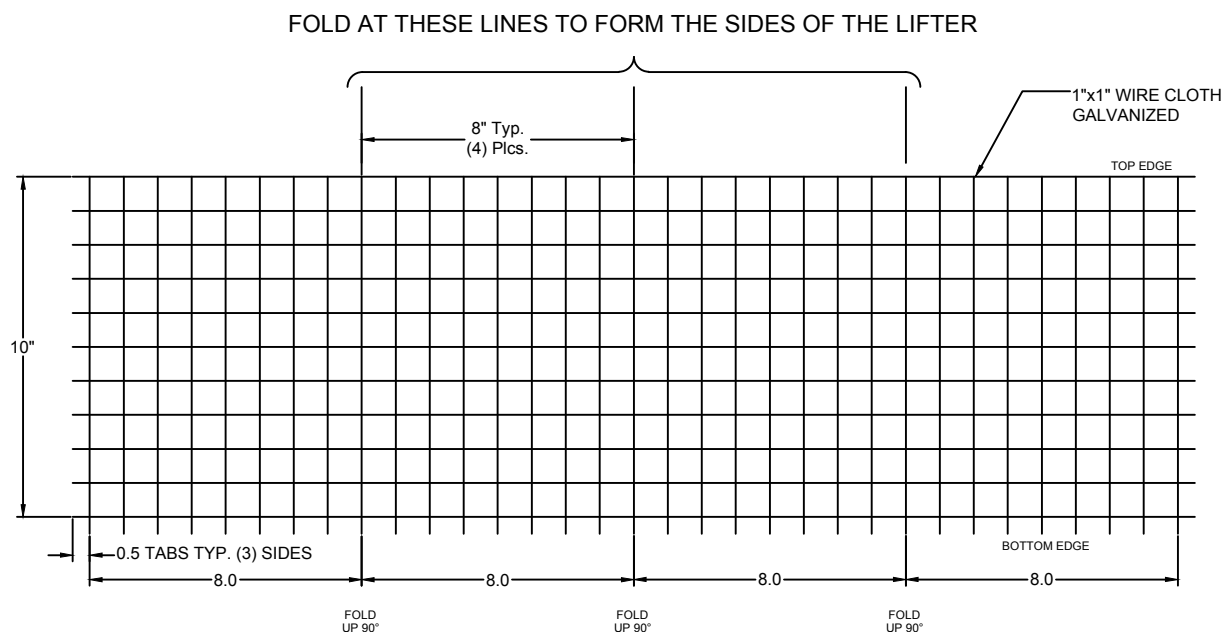


Southern California Bluebird Club

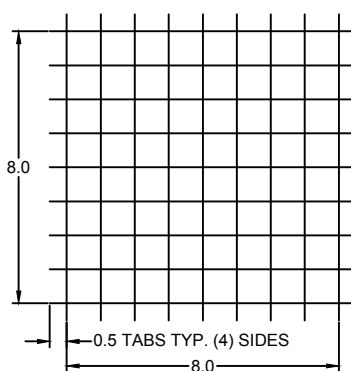
www.socalbluebirds.org

The Purvis Lifter Plans

Sides & Bottom - Flat View



SIDES - FLAT PATTERN



BOTTOM - FLAT PATTERN

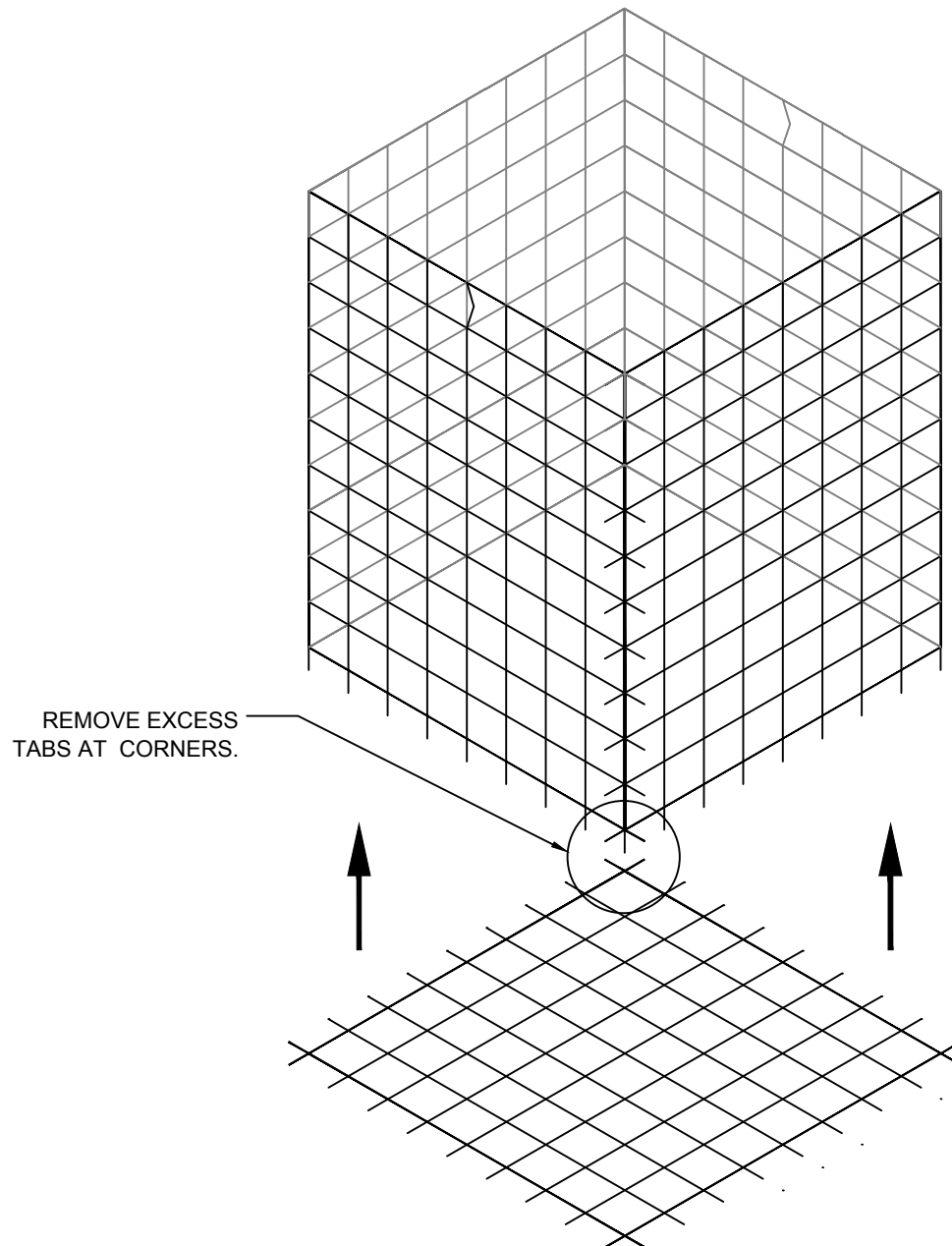
Southern California Bluebird Club

www.socalbluebirds.org



The Purvis Lifter Plans

Sides & Bottom - Assembly View



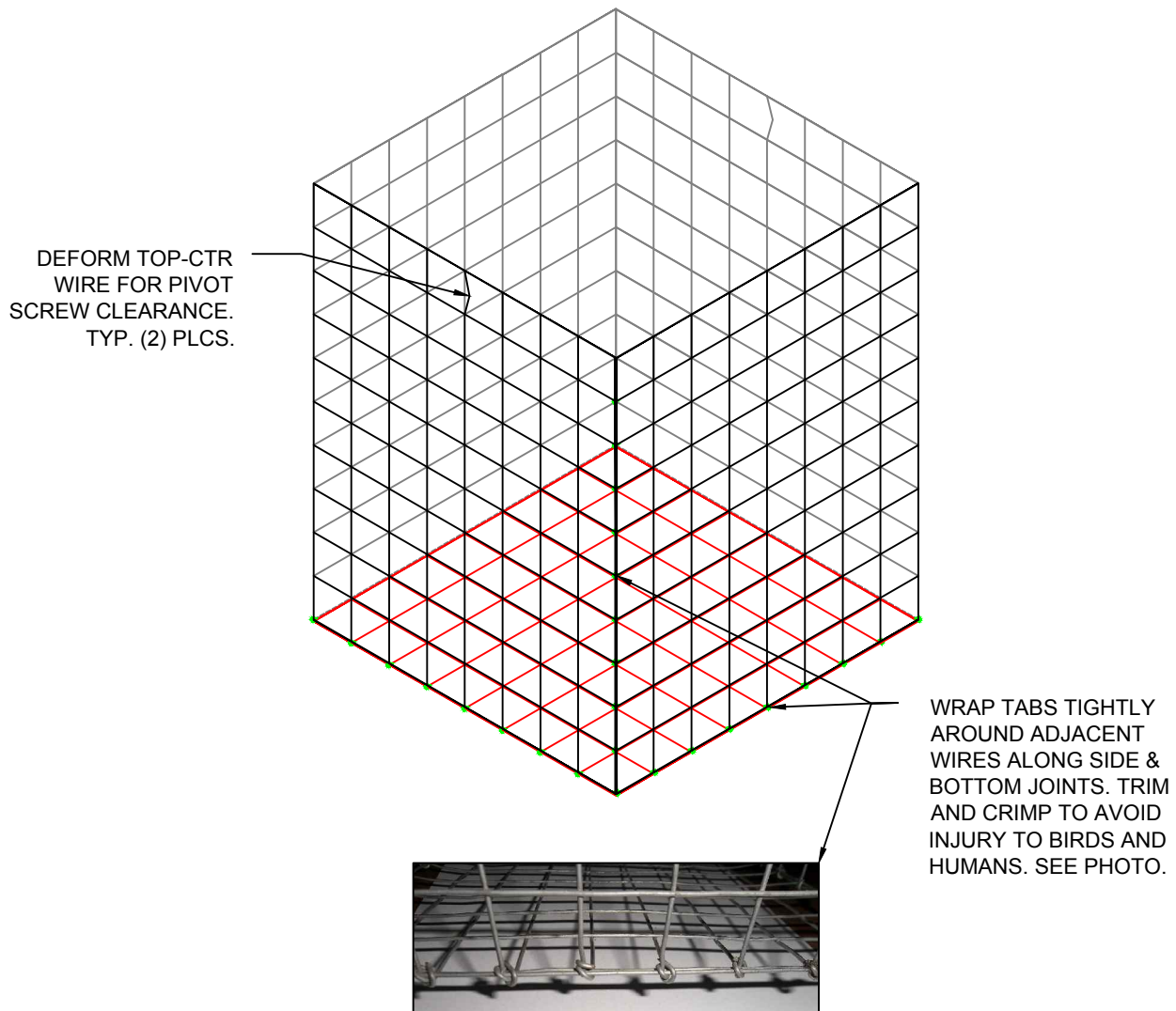
Southern California Bluebird Club

www.socalbluebirds.org



The Purvis Lifter Plans

Sides & Bottom - Fabrication View



SIDES & BOTTOM - FABRICATION

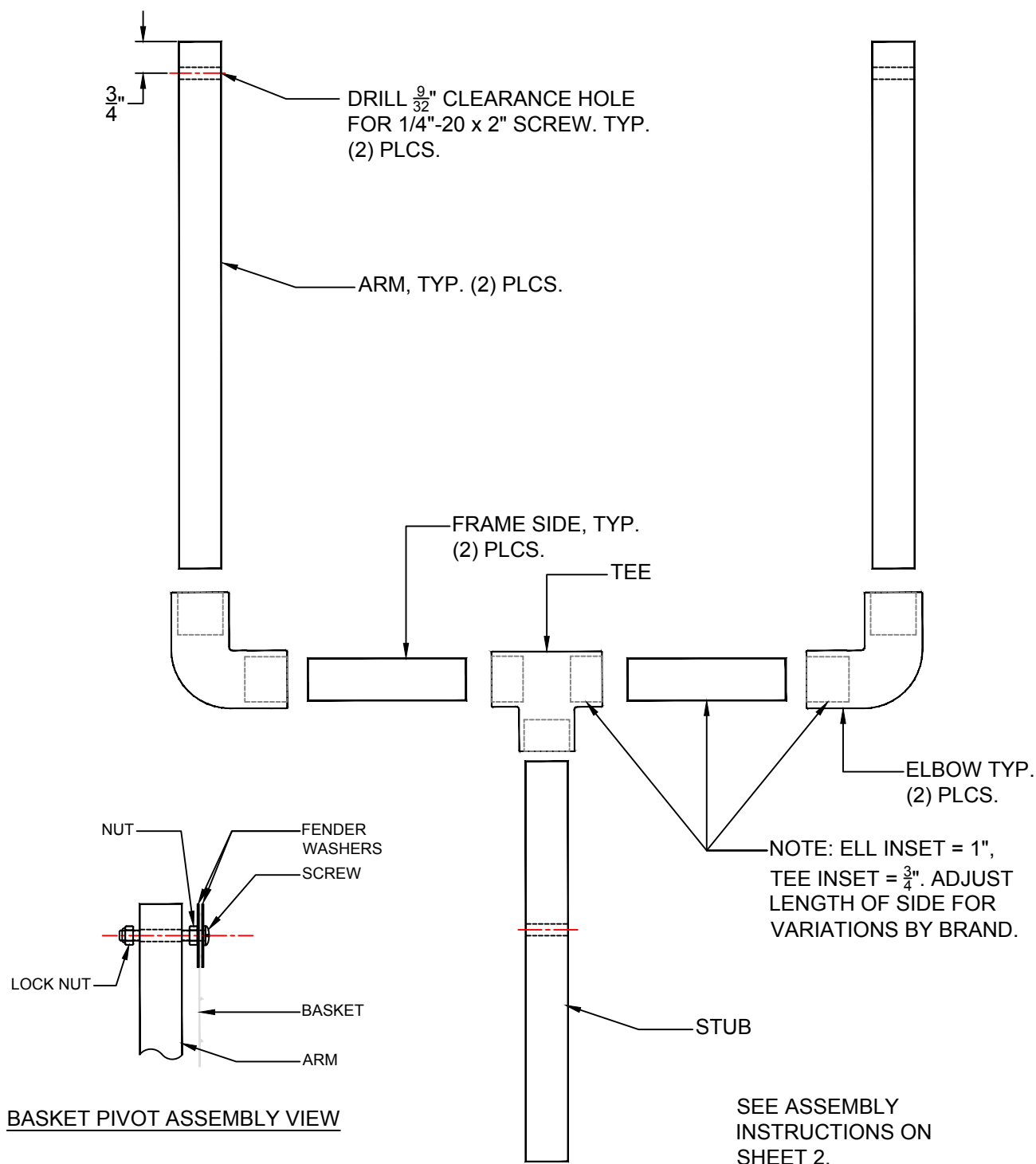
Southern California Bluebird Club

www.socalbluebirds.org



The Purvis Lifter Plans

Frame - Exploded View



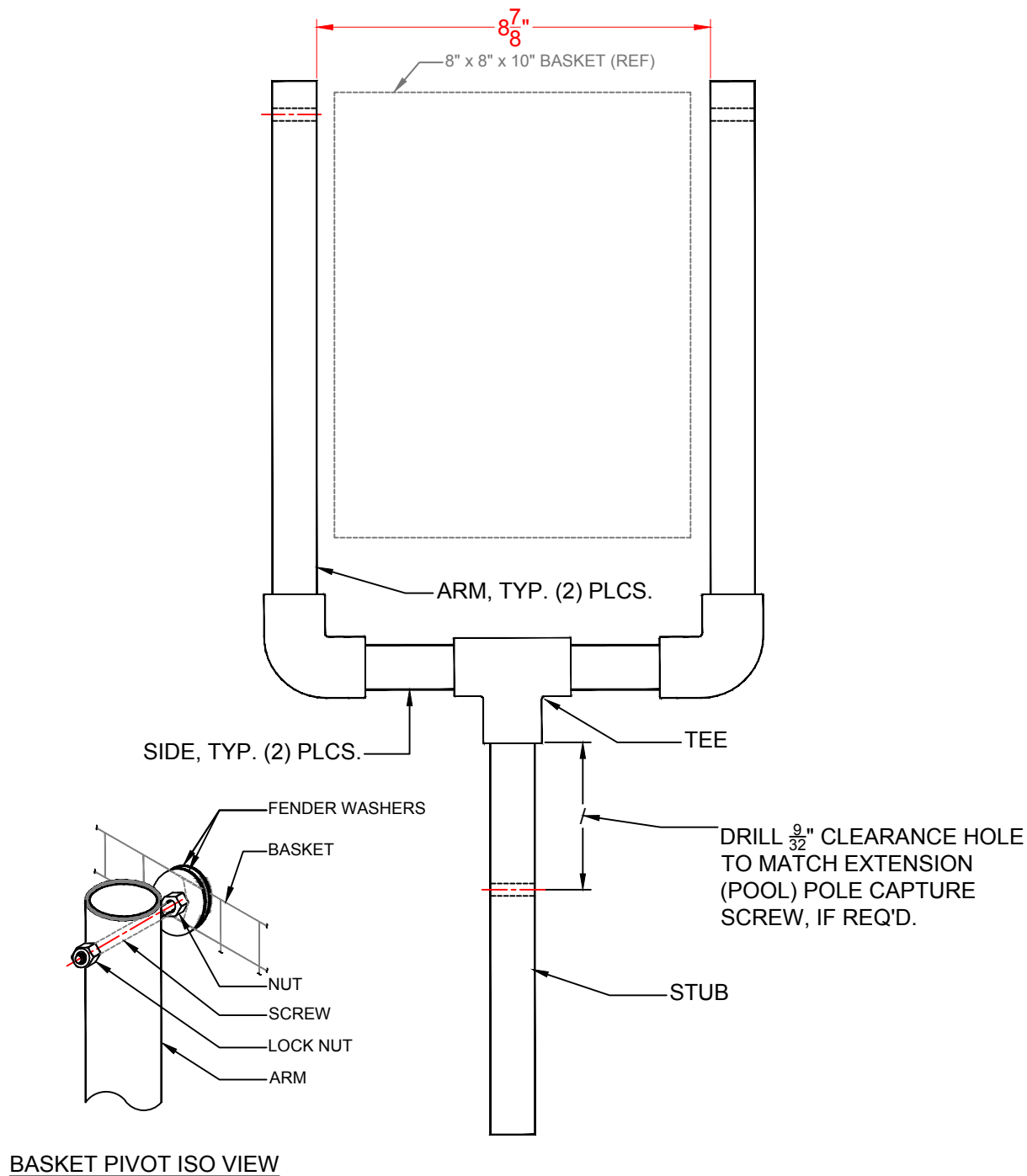
Southern California Bluebird Club

www.socalbluebirds.org



The Purvis Lifter Plans

Frame - Assembled/Fit View



Southern California Bluebird Club

www.socalbluebirds.org

